

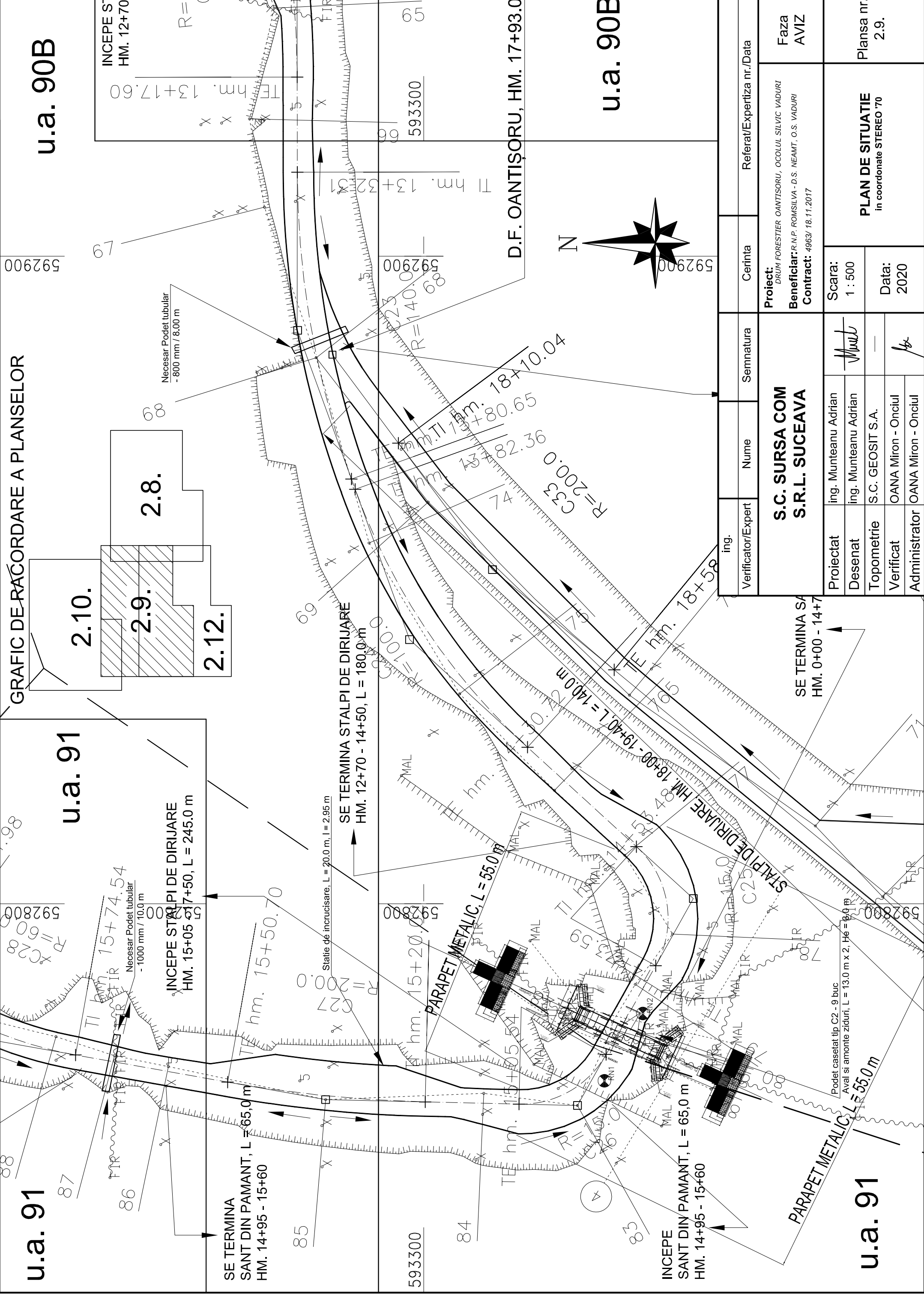
u.a. 91

u.a. 91

u.a. 90B

u.a. 90B

GRAFIC DE RĂCORDARE A PLANSELOR



INCEPE STALPI DE DIRIJARE HM. 12+70  
 HM. 13+17.60  
 R=...

2.10.  
 2.9.  
 2.8.  
 2.12.

Necesar Podet tubular - 800 mm / 8.00 m

INCEPE STALPI DE DIRIJARE HM. 15+05 - 17+50, L = 245.0 m

Statie de incruisare, L = 20.0 m, l = 2.95 m

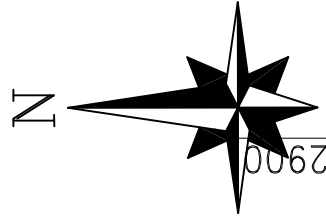
SE TERMINA STALPI DE DIRIJARE HM. 12+70 - 14+50, L = 180.0 m

PARAPET METALIC, L = 55.0 m

INCEPE SANT DIN PAMANT, L = 65.0 m HM. 14+95 - 15+60

PARAPET METALIC, L = 55.0 m

D.F. OANTIȘORU, HM. 17+93.0



SE TERMINA STALPI DE DIRIJARE HM. 18+00 - 19+40, L = 140.0 m

Podet casetat tip C2 - 9 buc  
 Aval si amonte ziduri, L = 13.0 m x 2, He = 9.0 m

ing.	Verificator/Expert	Nume	Semnatura	Cerinta	Referat/Expertiza nr./Data
<b>S.C. SURSA COM S.R.L. SUCEAVA</b>					
Proiectat	ing. Munteanu Adrian				Faza AVIZ
Desenat	ing. Munteanu Adrian				
Topometrie	S.C. GEOSIT S.A.				Scara: 1 : 500 Data: 2020
Verificat	OANA Miron - Onciul				
Administrator	OANA Miron - Onciul				

Proiect: DRUM FORESTIER OANTIȘORU, OCULUI SILVIC VADURI  
 Beneficiar: R.R.N.P. ROMSILVA - D.S. NEAMT, O.S. VADURI  
 Contract: 4963/18.11.2017

PLAN DE SITUATIE  
 in coordonate STEREO '70  
 Plansa nr.  
 2.9.