



---

Agenția pentru Protecția Mediului Prahova

---

ANEXA 10

Nr.6090/ 10.05.2017

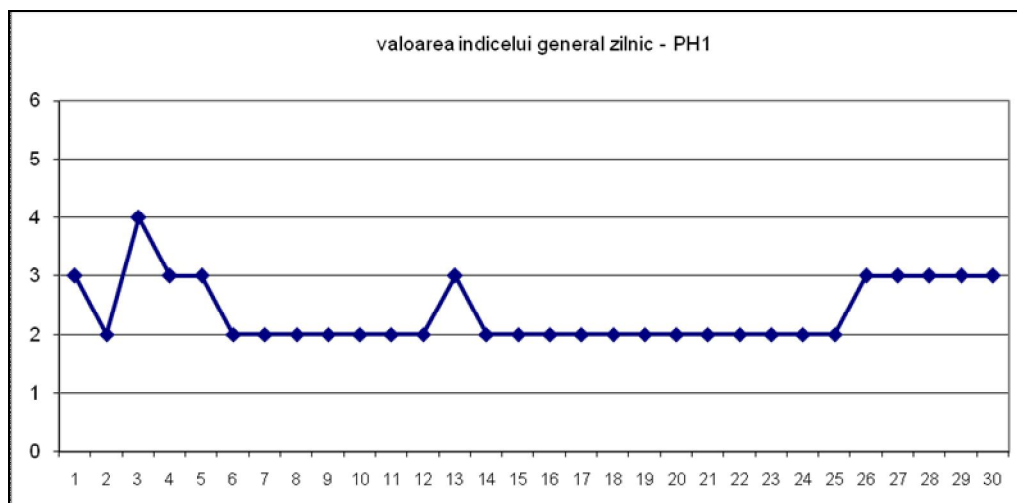
INFORMARE

Evoluția calitatii aerului în luna aprilie 2017

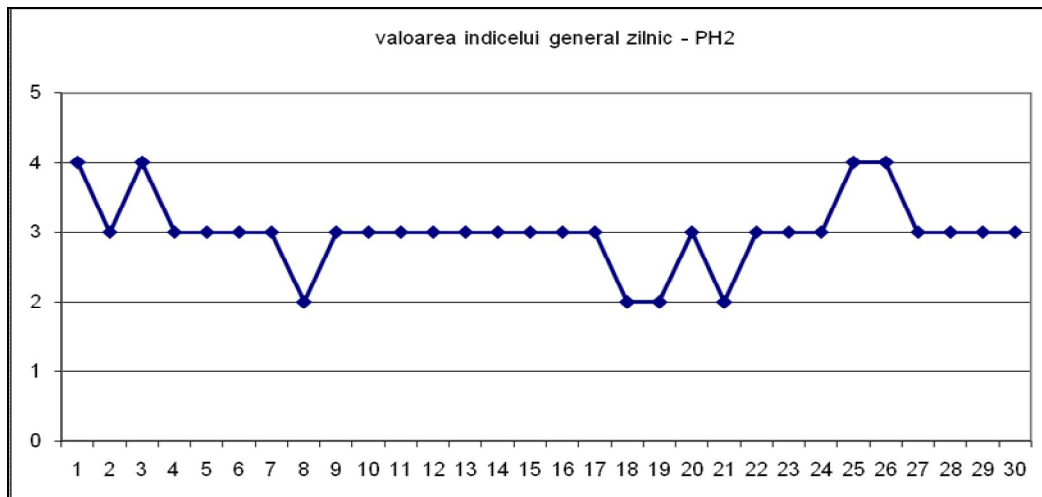
Prezentăm mai jos evoluția indicelui general de calitate a aerului din rețeaua locală de monitorizare a calitatii aerului automată și manuală.

A. Evoluția indicelui general de calitate a aerului din rețeaua locală de monitorizare:

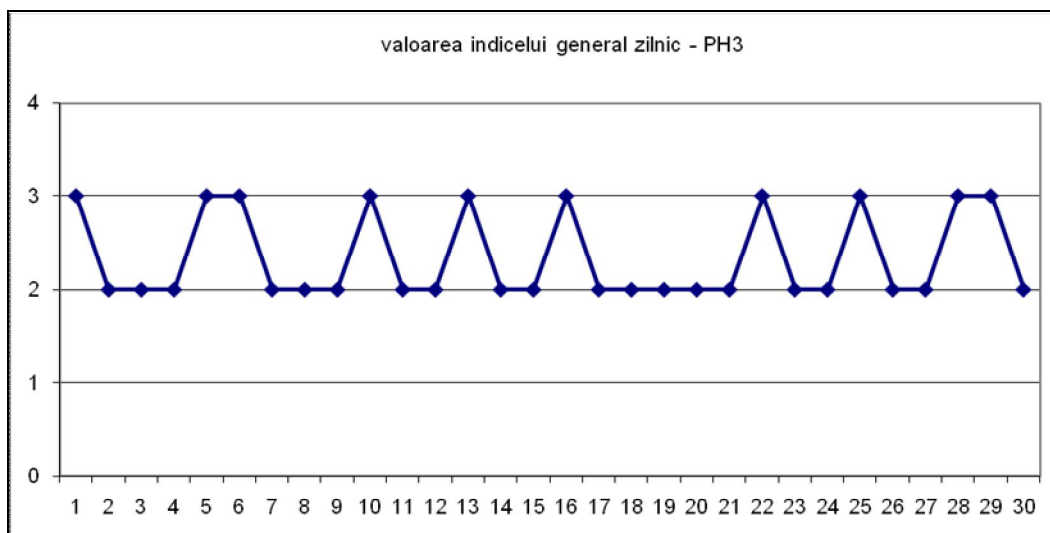
Stația PH1- str. Ghe.Gr.Cantacuzino



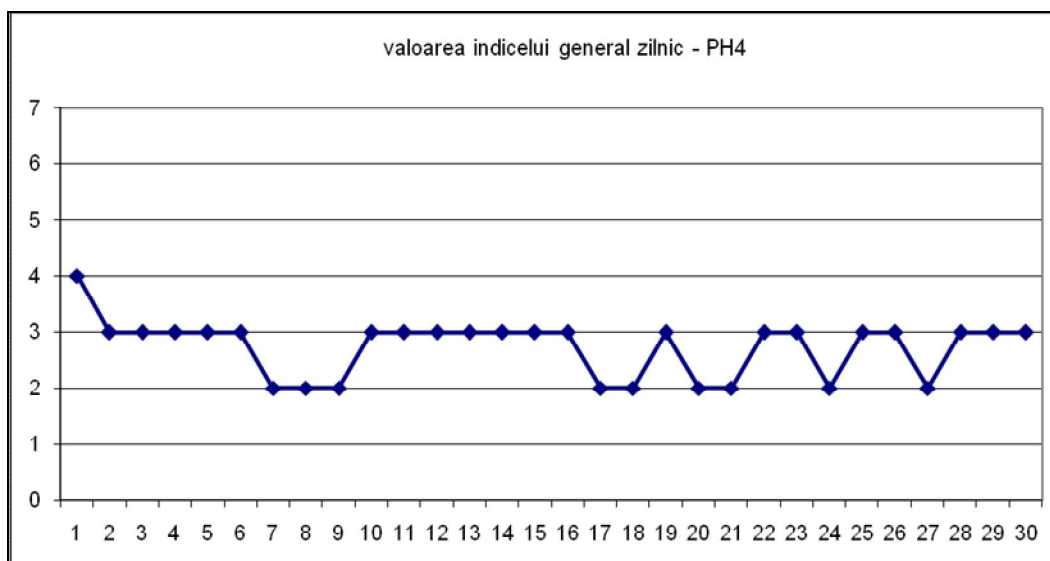
### Statia PH2 - p-ta Victoriei



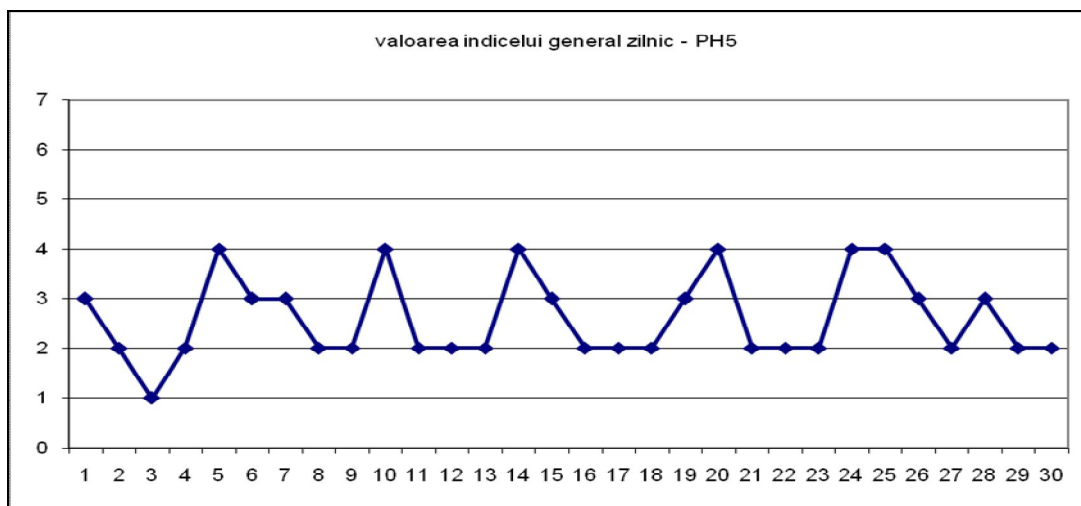
### Statia PH3 -Blejoi, primarie



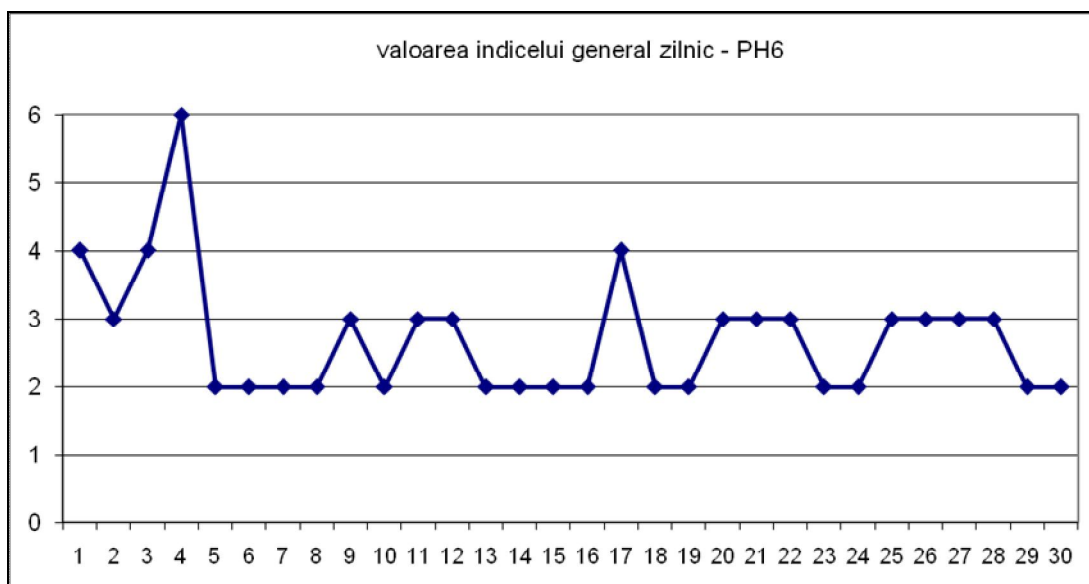
### Statia PH4 - Brazi, primarie



## Statia PH 5 – B-dul Bucuresti



## Statia PH 6- Mihai Bravu

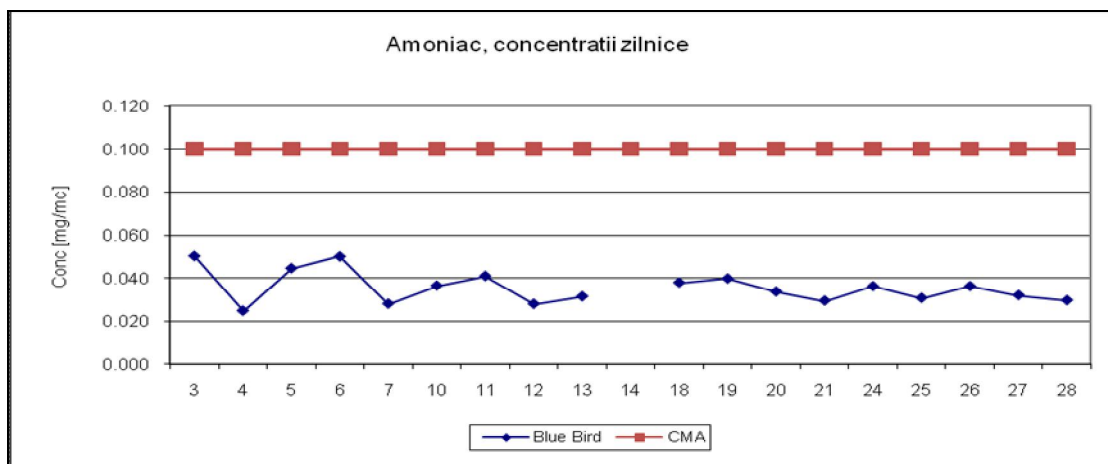


Datele sunt furnizate de statiile automate din Reteaua nationala de Monitorizare a Calitatii Aerului.

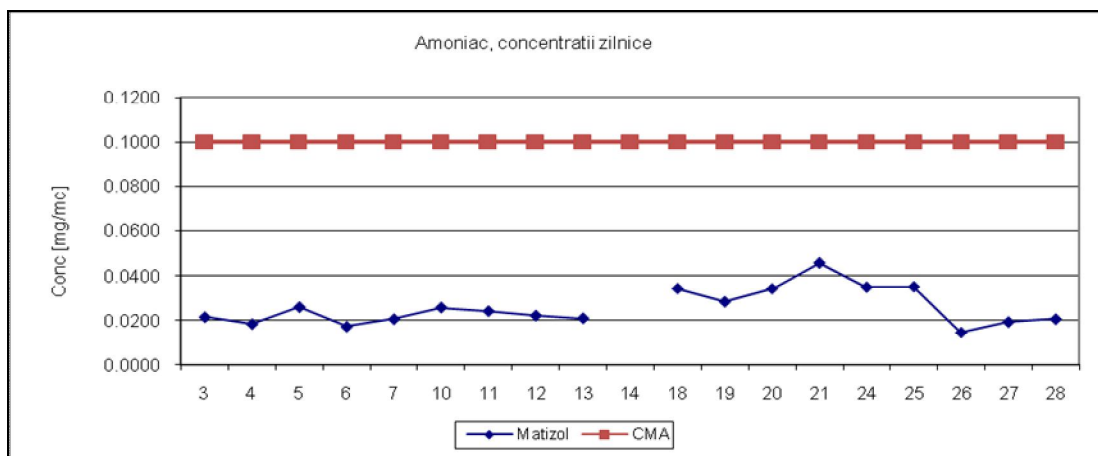


B. Variatia concentratiilor medii zilnice pentru indicatorii specifici – statii manuale de monitorizare

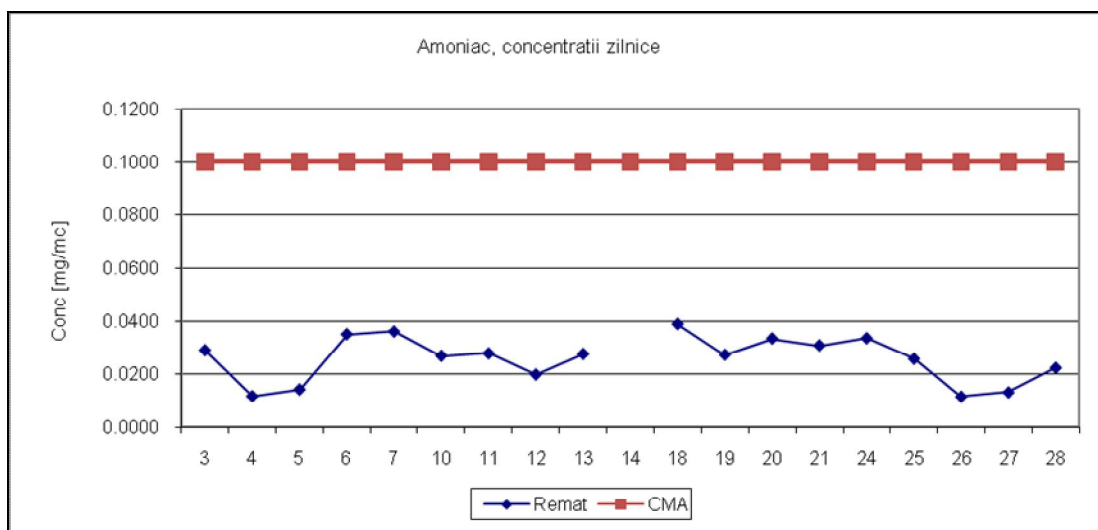
Punct de prelevare BLUE BIRD, poluant masurat amoniac



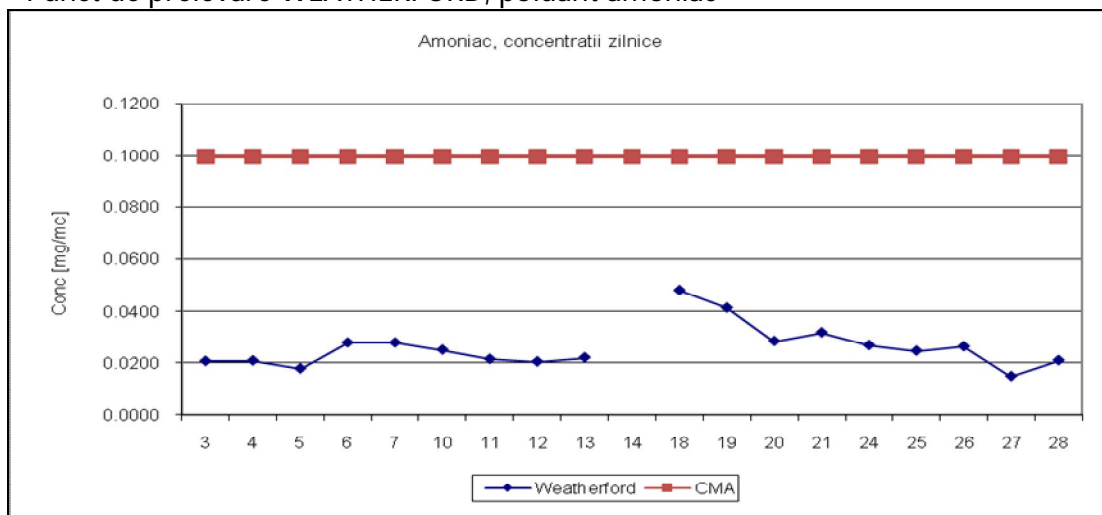
Punct de prelevare MATIZOL, poluant masurat amoniac



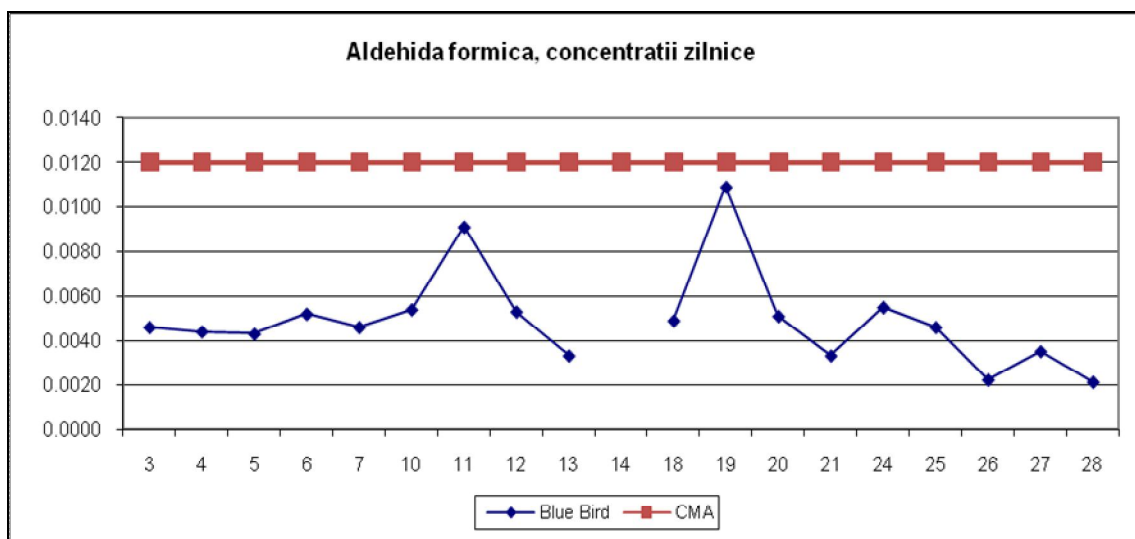
Punct de prelevare REMAT , poluant masurat amoniac



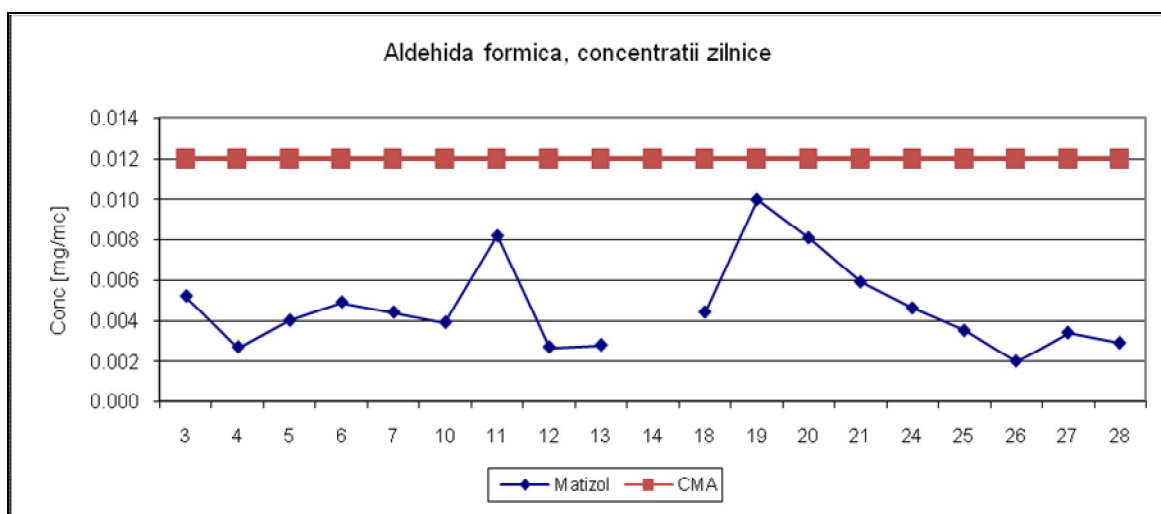
### Punct de prelevare WEATHERFORD, poluant amoniac



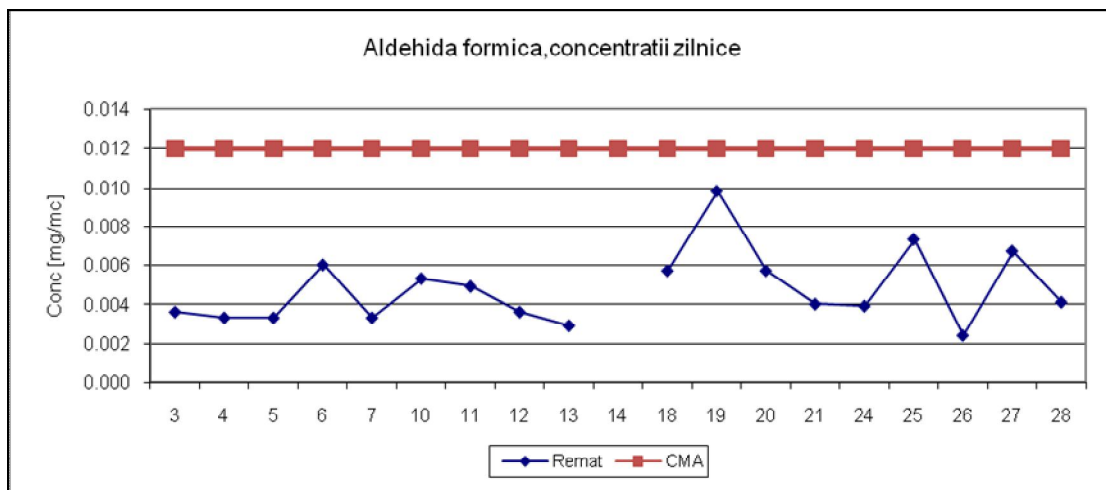
### Punct de prelevare BLUE BIRD, poluant masurat aldehida formica



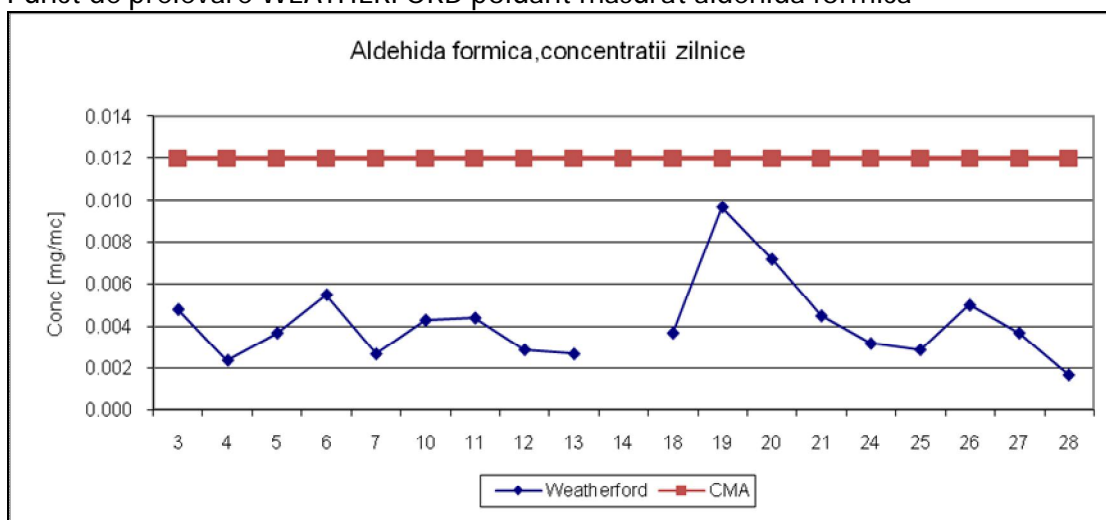
### Punct de prelevare MATIZOL, poluant masurat aldehida formica



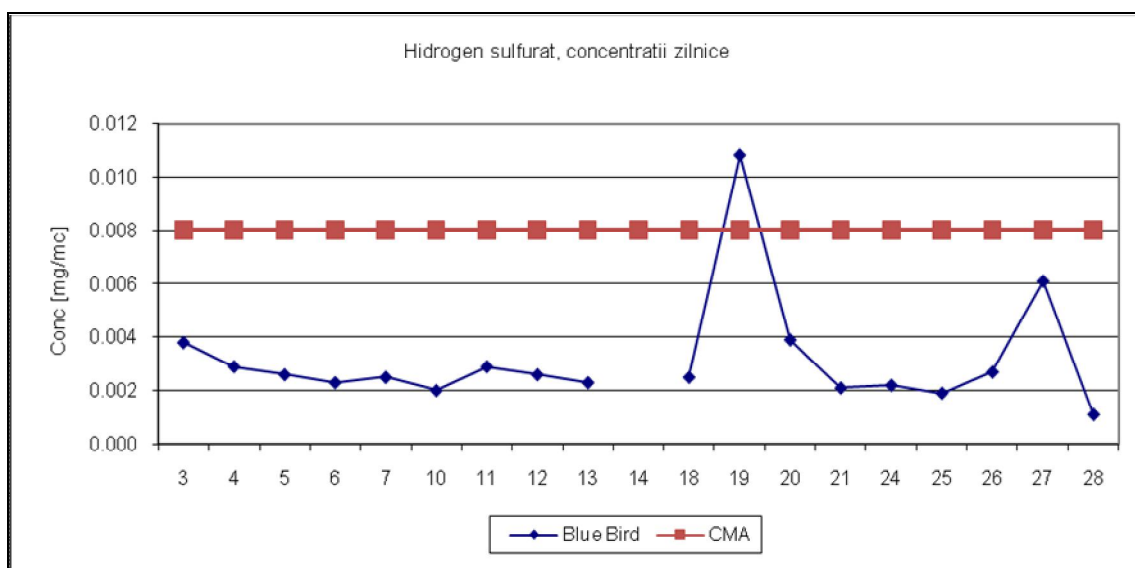
Punct de prelevare REMAT poluant masurat aldehida formica



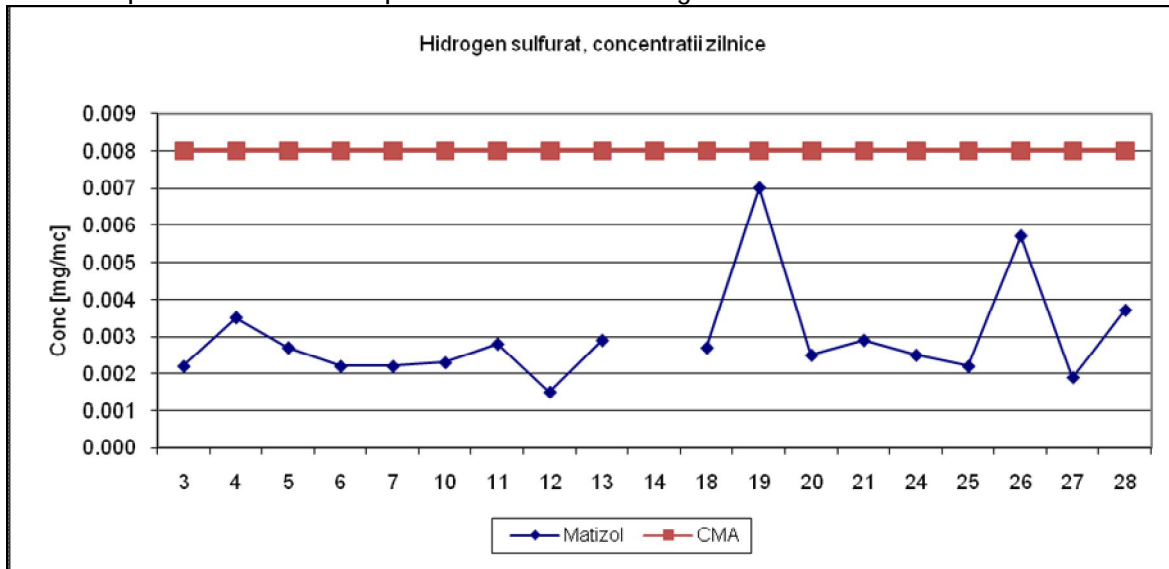
Punct de prelevare WEATHERFORD poluant masurat aldehida formica



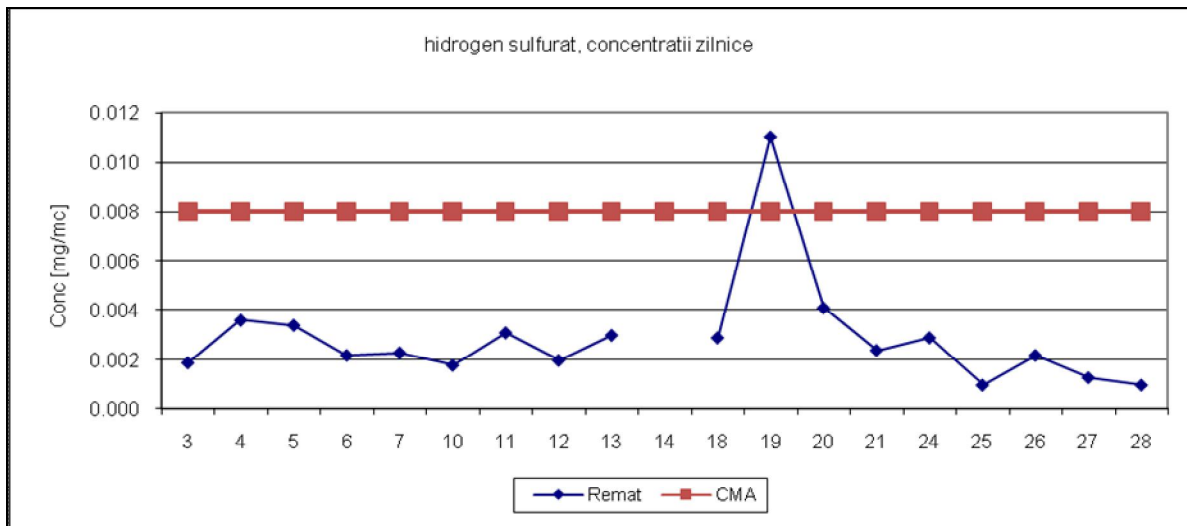
Punct de prelevare BLUE BIRD, poluant masurat hidrogen sulfurat



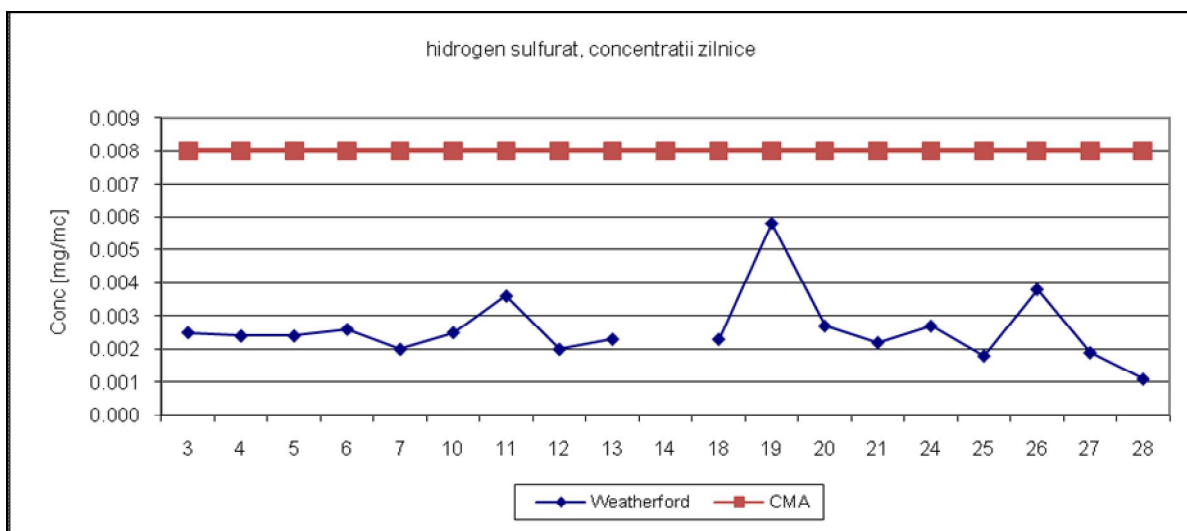
Punct de prelevare MATIZOL poluant masurat hidrogen sulfurat



Punct de prelevare REMAT , poluant masurat hidrogen sulfurat



Punct de prelevare WEATHERFORD, poluant masurat hidrogen sulfurat



Datele sunt furnizate in urma prelevarii manuale si determinarilor chimice efectuate in laboratorul APM Prahova.

Sef serviciu Monitorizare si Laboratoare,

Ing. Mateescu Cornelia

Contact APM Prahova

Nume/prenume: Mateescu Cornelia (*conform Anexei 6, din OM 546/2008*)

Adresă de e-mail: [office@apmph.anpm.ro](mailto:office@apmph.anpm.ro) Telefon: 0244-544134



---

**AGENȚIA PENTRU PROTECȚIA MEDIULUI PRAHOVA**

Str. Gh.Gr.Cantacuzino, nr.306, Ploiești, Cod 100466

E-mail: [office@apmph.anpm.ro](mailto:office@apmph.anpm.ro); Tel. 0244 544134; Fax. 0244 515811