



---

**Agenția pentru Protecția Mediului Prahova**

---

ANEXA 10

Nr.3737/ 10.03.2016

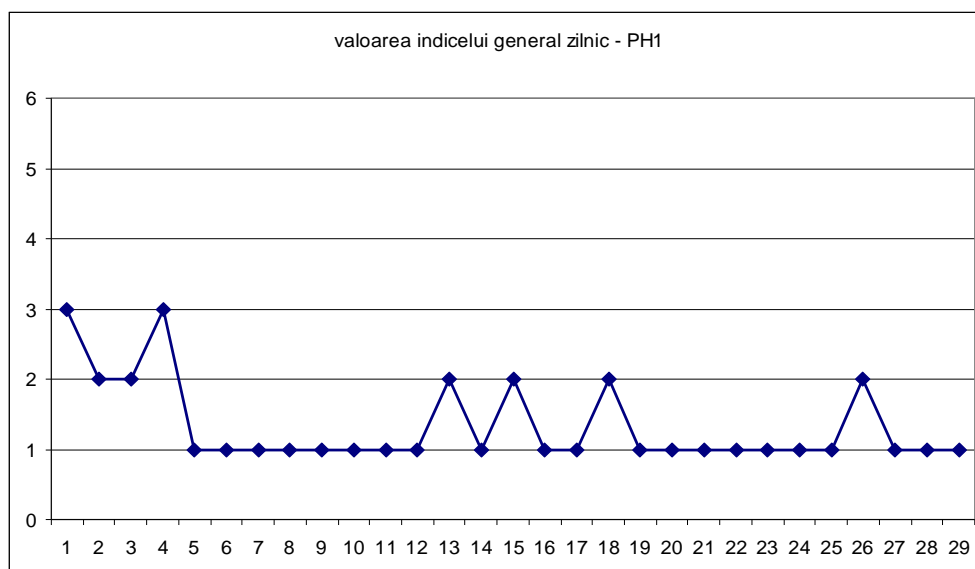
INFORMARE

Evoluția calitatii aerului în luna februarie 2016

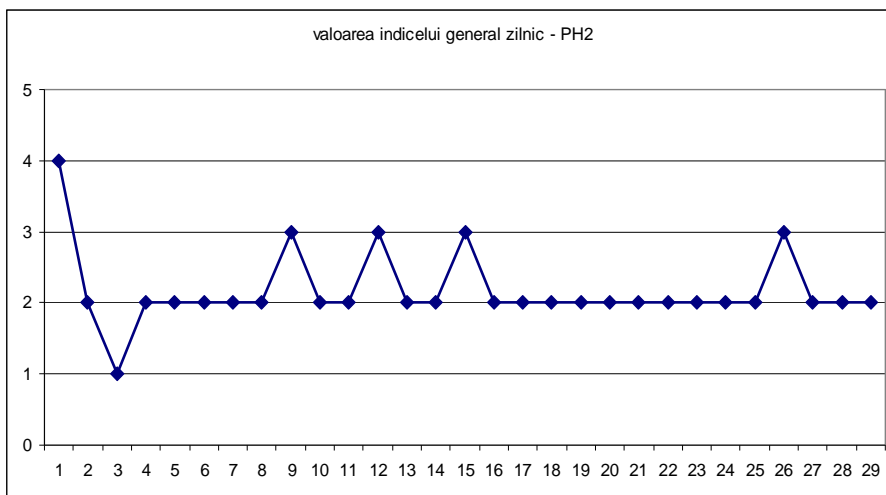
Prezentăm mai jos evoluția indicelui general de calitate a aerului din rețeaua locală de monitorizare a calitatii aerului automată și manuală.

A. Evoluția indicelui general de calitate a aerului din rețeaua locală de monitorizare:

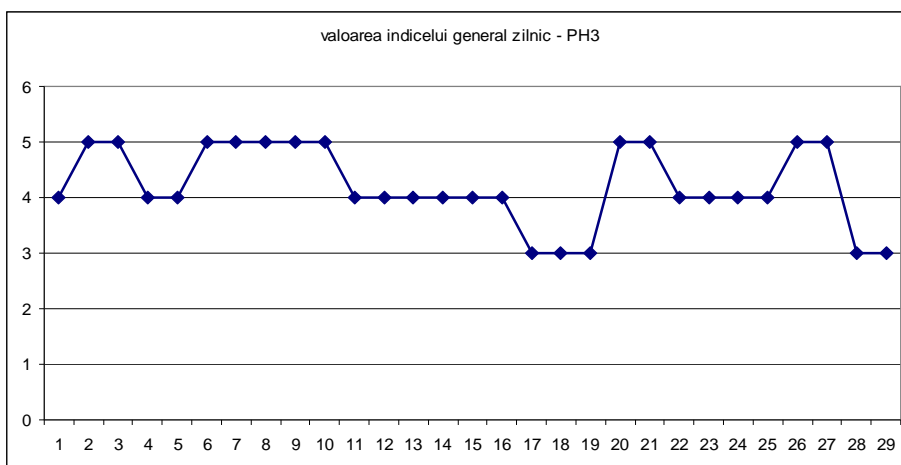
Stia PH1- str Ghe.Gr. Cantacuzino



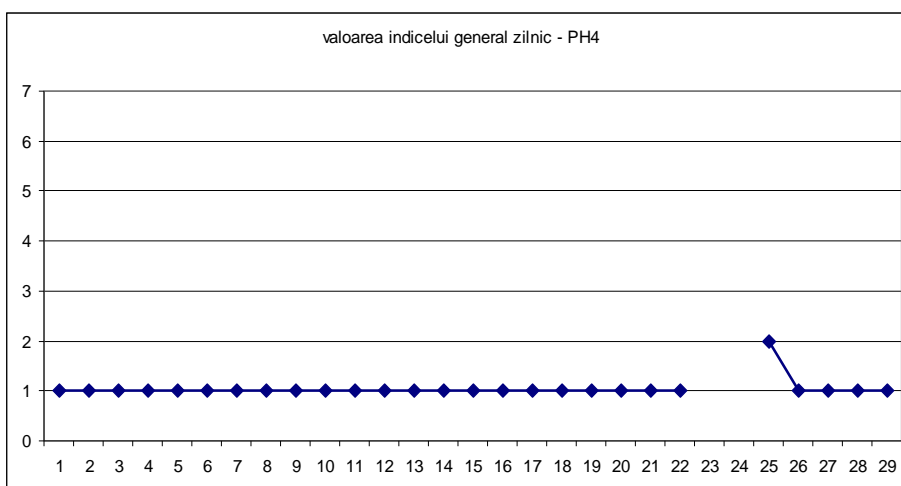
Stia PH2 - p-ta Victoriei



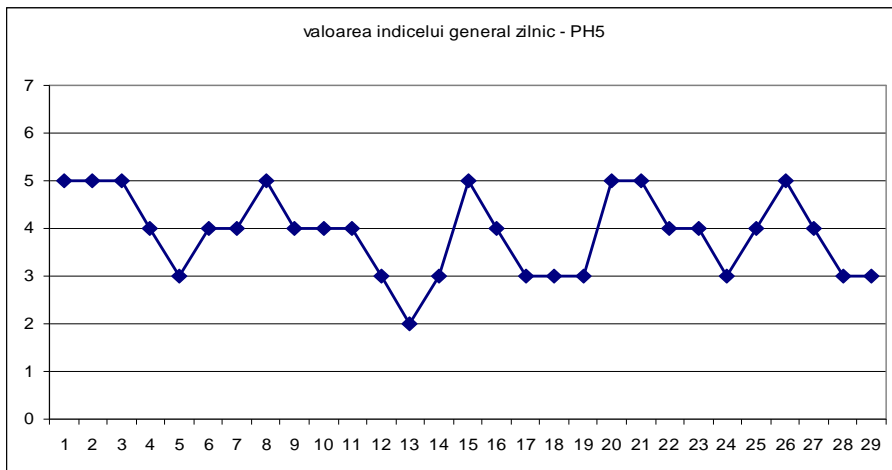
### Statia PH3 -Blejoi, primarie



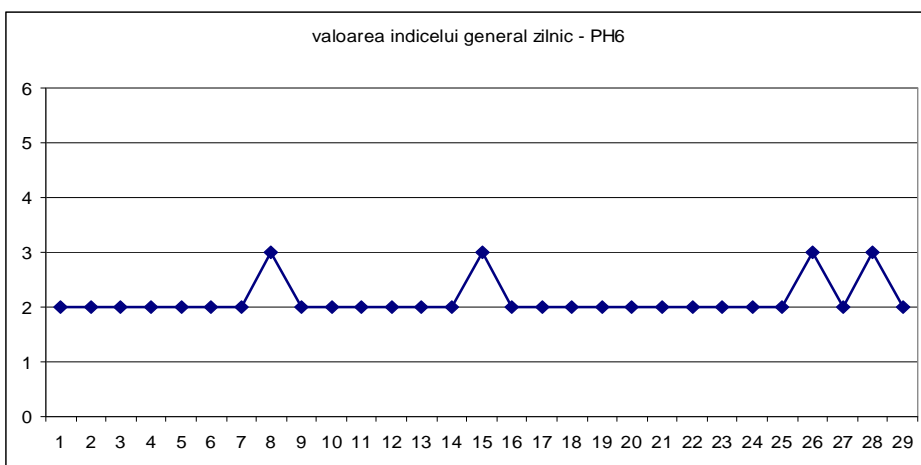
### Statia PH4 - Brazi, primarie



### Statia PH 5 – B-dul Bucuresti



### Statia PH 6- Mihai Bravu

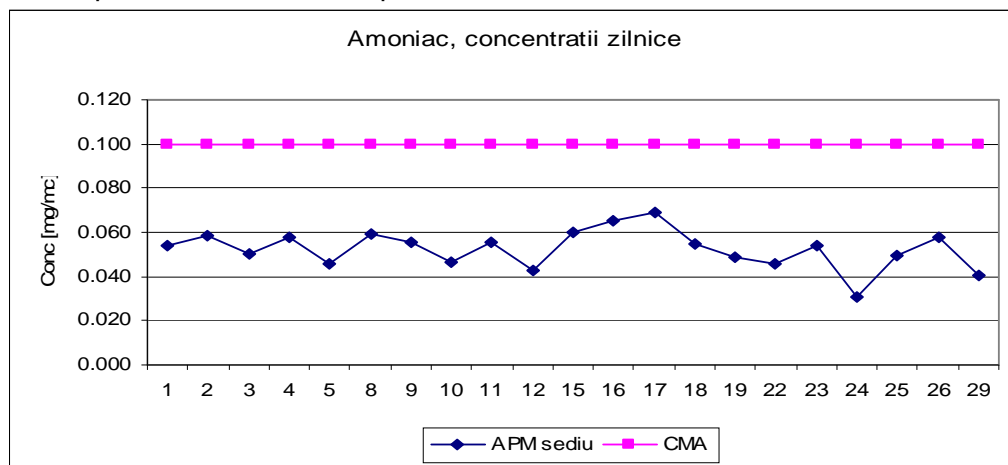


Datele sunt furnizate de statiile automate din Reteaua nationala de Monitorizare a Calitatii Aerului.

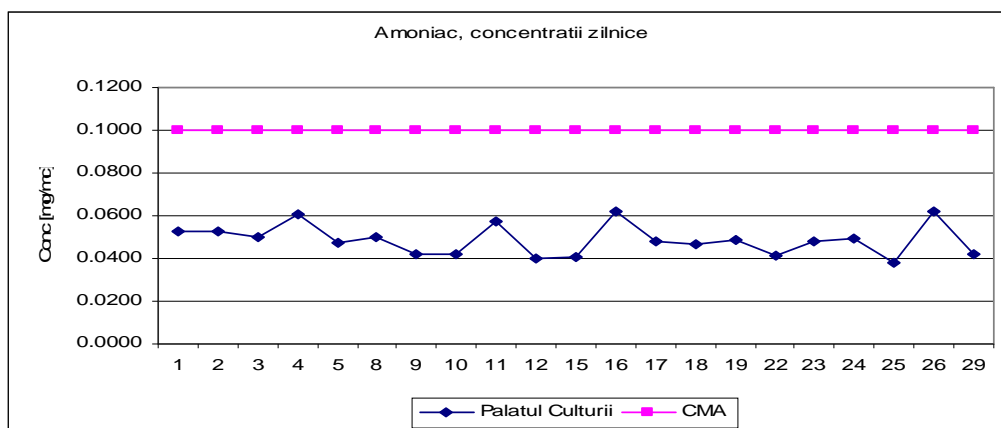
B. Variatia concentratiilor medii zilnice pentru indicatorii specifici –statii manuale de monitorizare



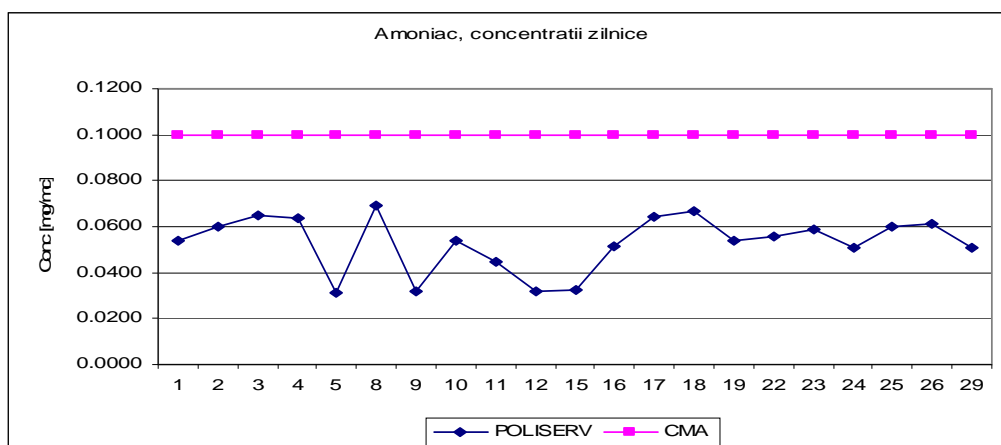
Punct de prelevare APM sediu, poluant masurat amoniac, adresa str Ghe Gr Cantacuzino



Punct de prelevare Palatul Culturii, poluant masurat amoniac, adresa b-dul Republicii

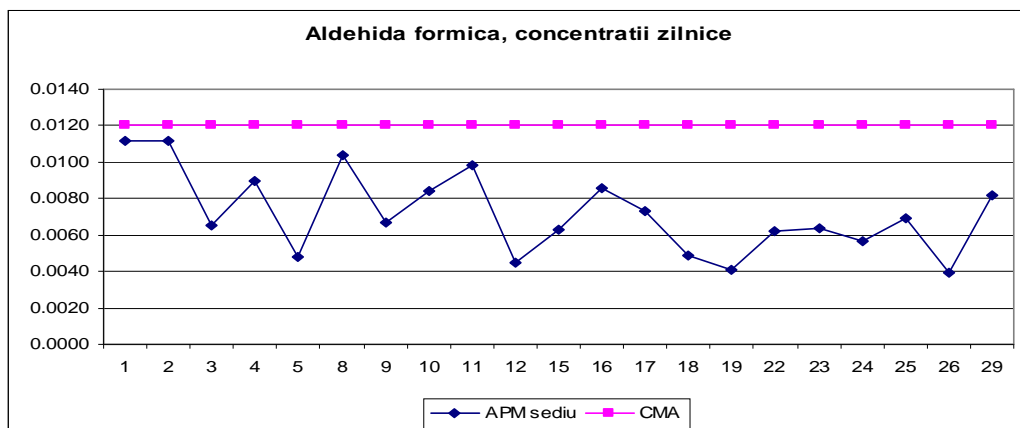


Punct de prelevare POLISERV , poluant masurat amoniac, adresa str Strandului

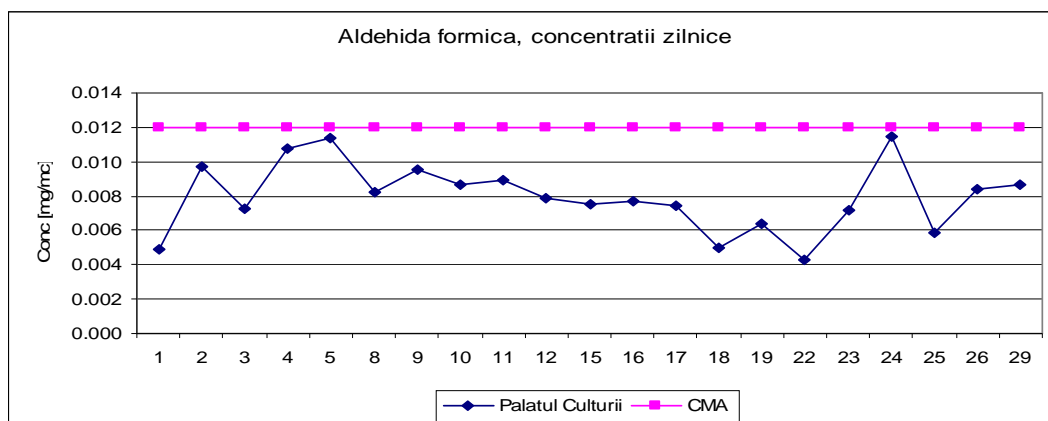


Punct de prelevare APM sediu, poluant masurat aldehida formica, adresa str Ghe Gr Cantacuzino

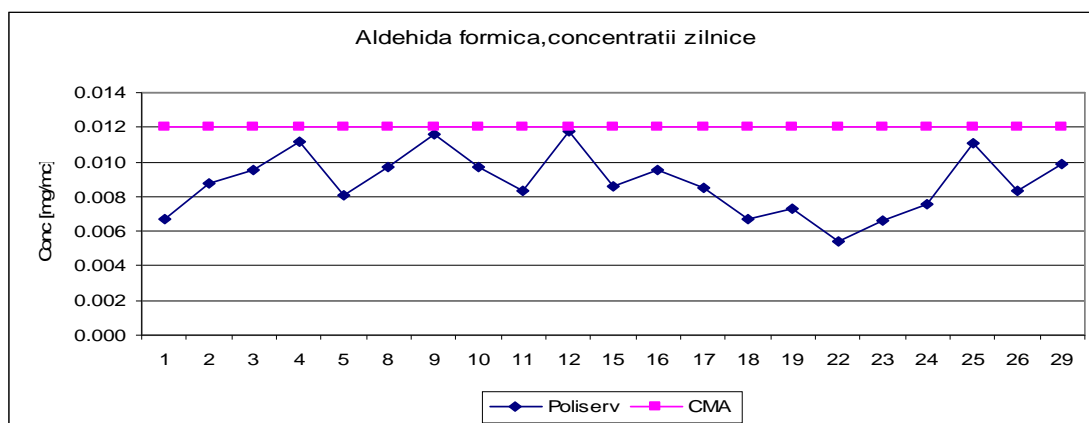




Punct de prelevare Palatul Culturii, poluant masurat aldehida formica, adresa b-dul Republicii

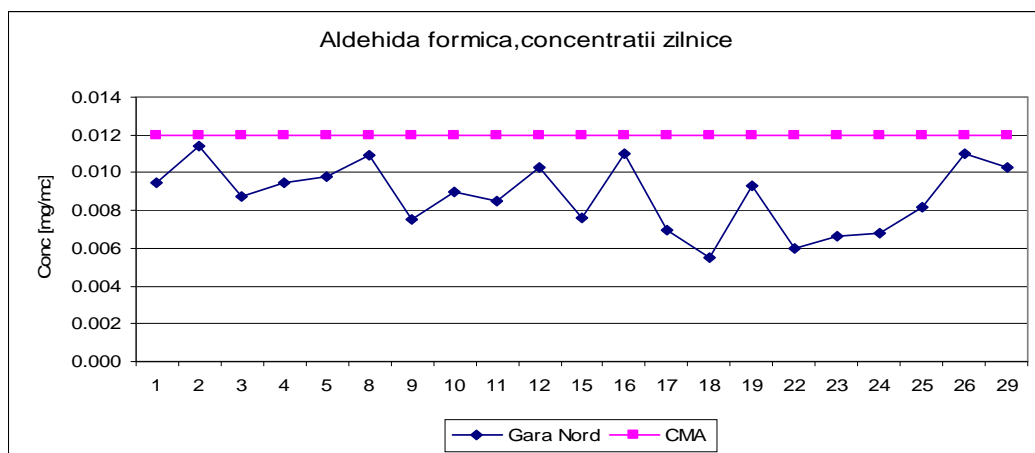


Punct de prelevare POLISERV , poluant masurat aldehida formica, adresa str Strandului

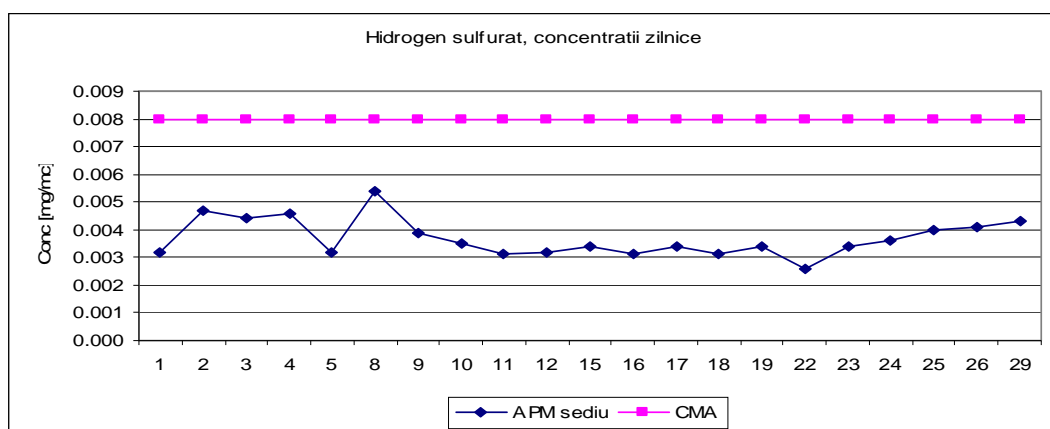


Punct de prelevare Gara Nord , poluant masurat aldehida formica, adresa str Dragalina

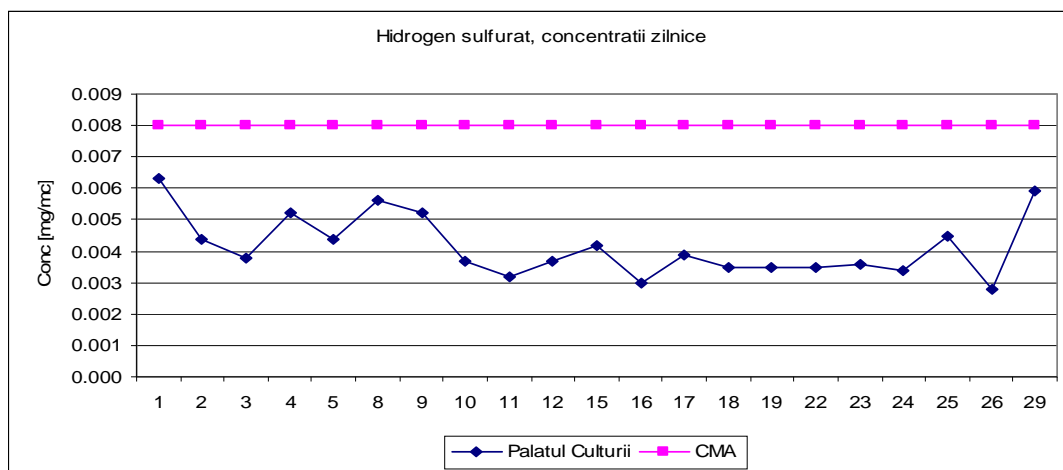




Punct de prelevare APM sediu, poluant masurat hidrogen sulfurat, adresa str Ghe Gr Cantacuzino

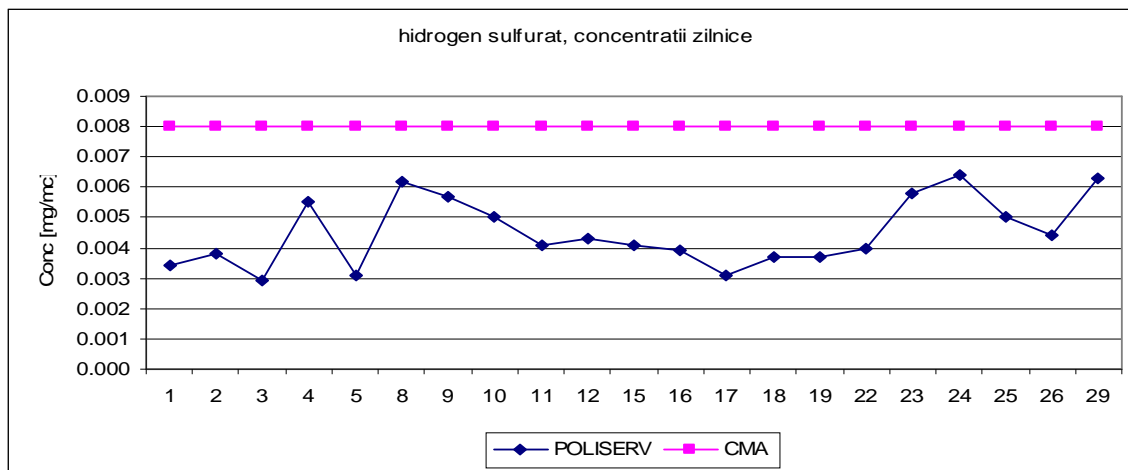


Punct de prelevare Palatul Culturii, poluant masurat hidrogen sulfurat, adresa b-dul Republicii

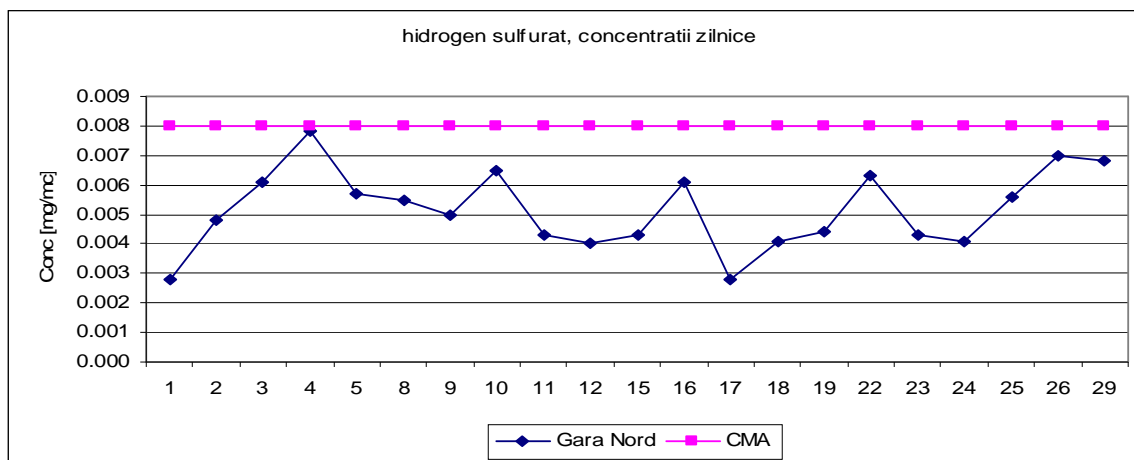


Punct de prelevare POLISERV , poluant masurat hidrogen sulfurat, adresa str Strandului

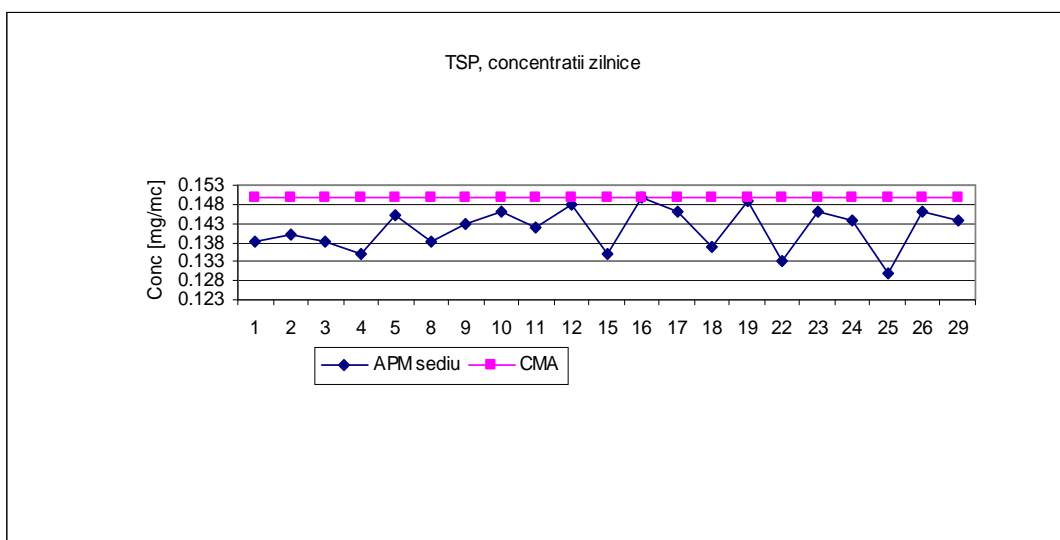




Punct de prelevare Gara Nord , poluant masurat hidrogen sulfurat, adresa str Dragalina



Punct de prelevare APM sediu, poluant masurat TSP, adresa str Ghe Gr Cantacuzino



Datele sunt furnizate in urma prelevarii manuale si determinarilor chimice efectuate in laboratorul APM Prahova.

Sef serviciu Monitorizare si Laboratoare,

Ing. Mateescu Cornelia

Contact APM Prahova

Nume/prenume: Mateescu Cornelia (*conform Anexei 6, din OM 546/2008*)

Adresă de e-mail: [office@apmph.anpm.ro](mailto:office@apmph.anpm.ro) Telefon: 0244-544134



---

**AGENȚIA PENTRU PROTECȚIA MEDIULUI PRAHOVA**

Str. Gh.Gr.Cantacuzino, nr.306, Ploiești, Cod 100466

E-mail: [office@apmph.anpm.ro](mailto:office@apmph.anpm.ro); Tel. 0244 544134; Fax. 0244 515811