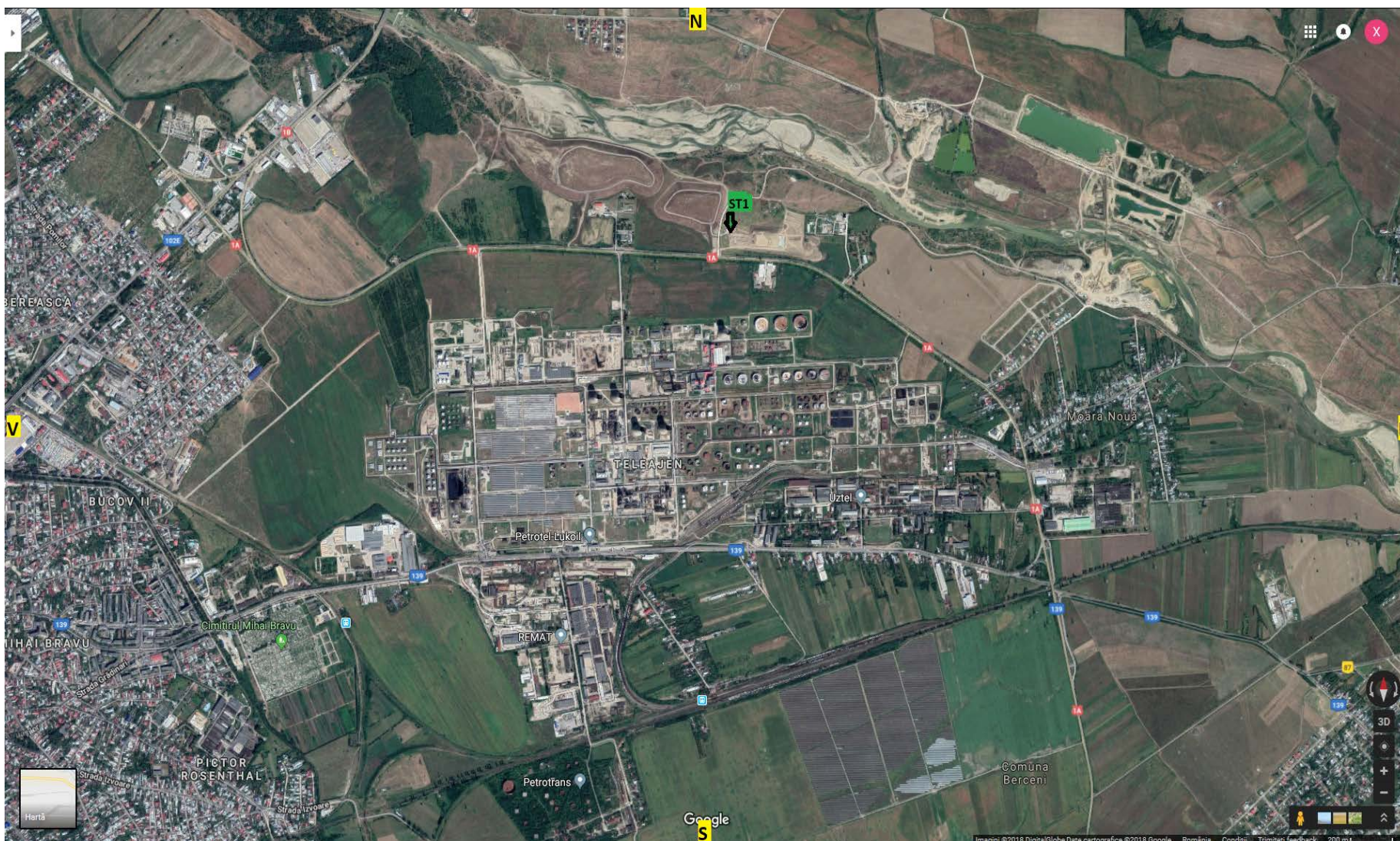
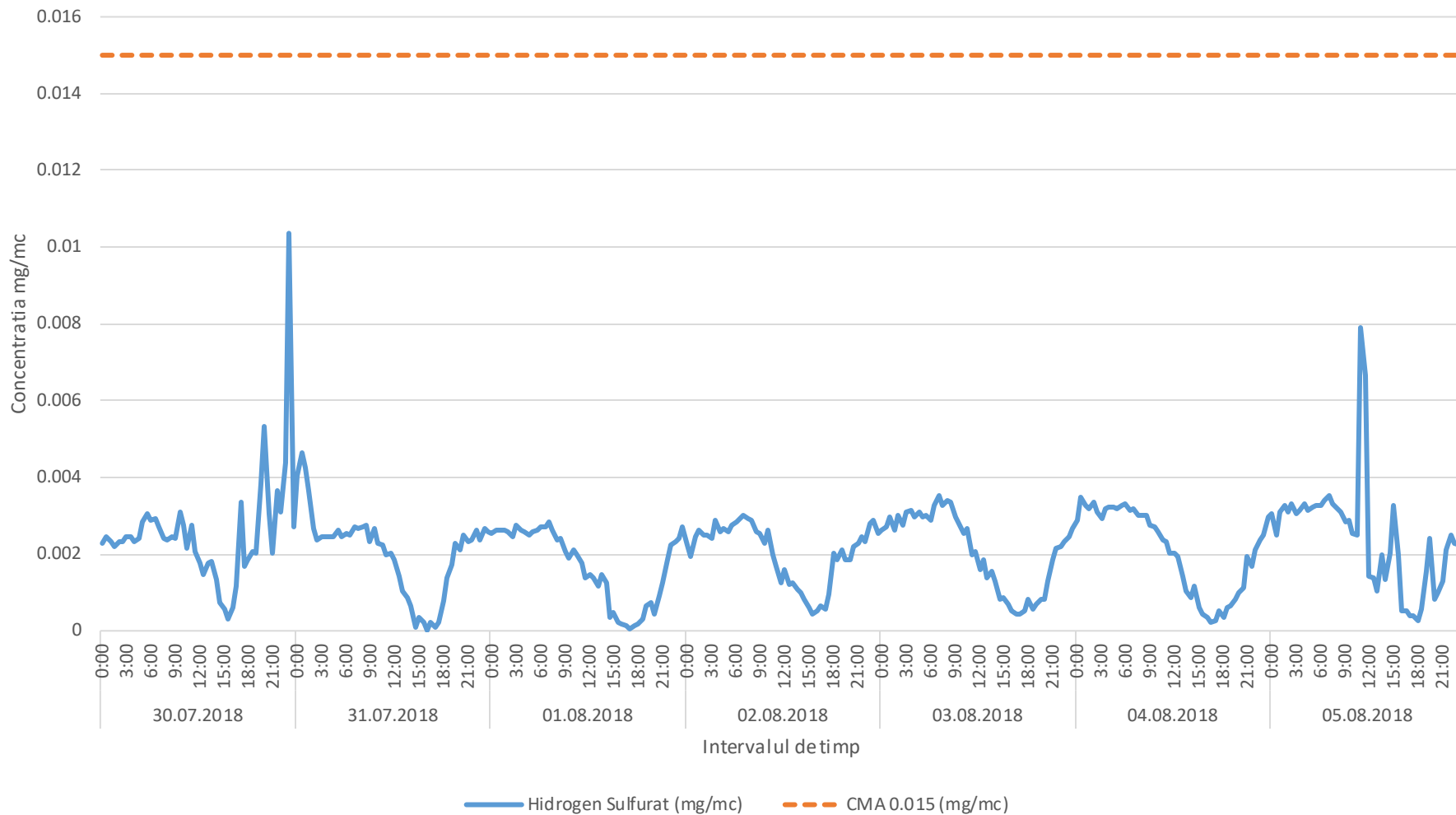


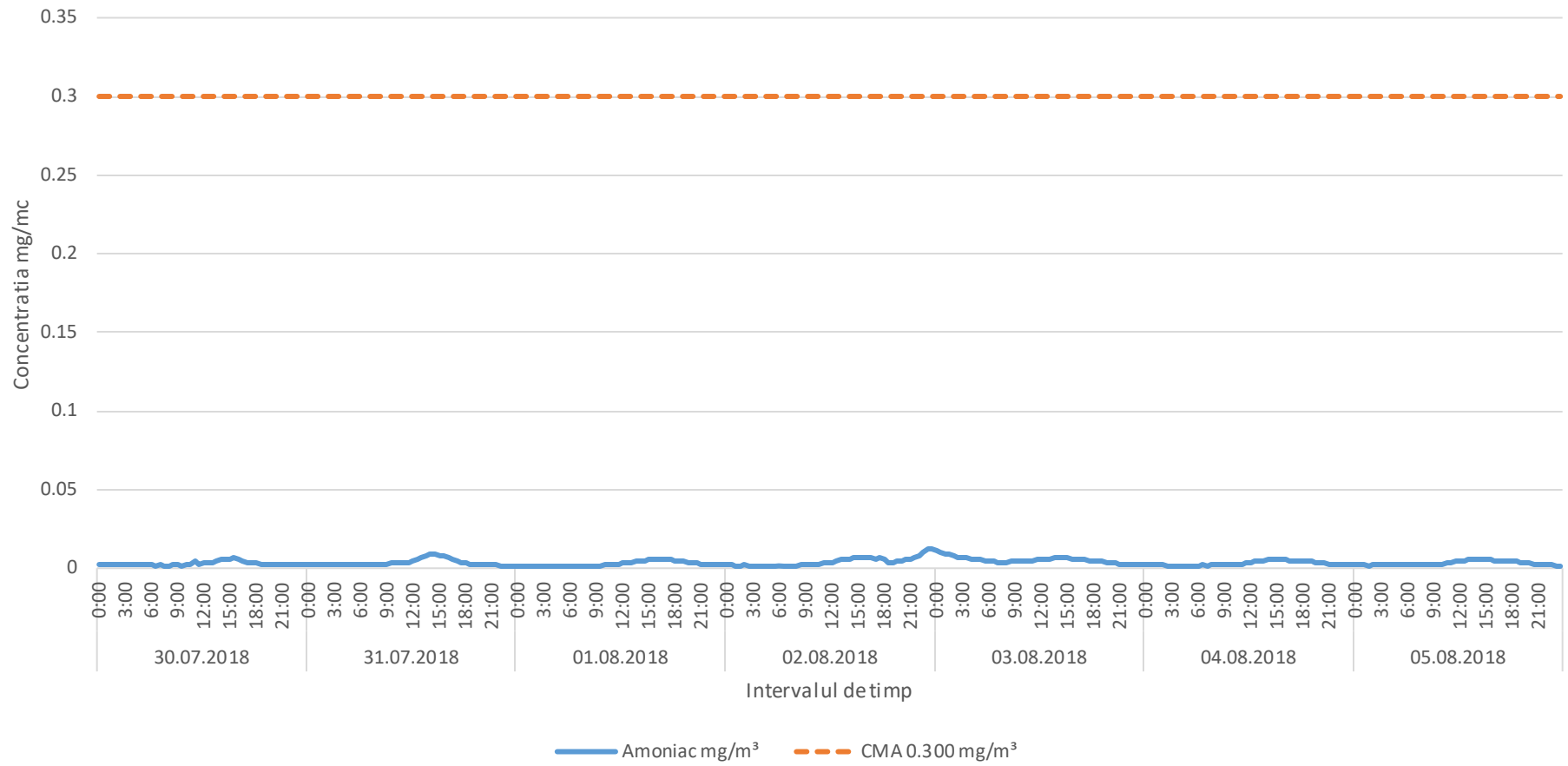
In data de 02.07.2018 stia mobila nr1 a fost amplasata in zona de nord a platformei industriale de est conform planului de monitorizare suplimentara al APM Prahova. Mai jos sunt prezentate rezultatele monitorizarii in perioada 30.07.2018-05.08.2018 precum si harta pozitionarii acestuia.



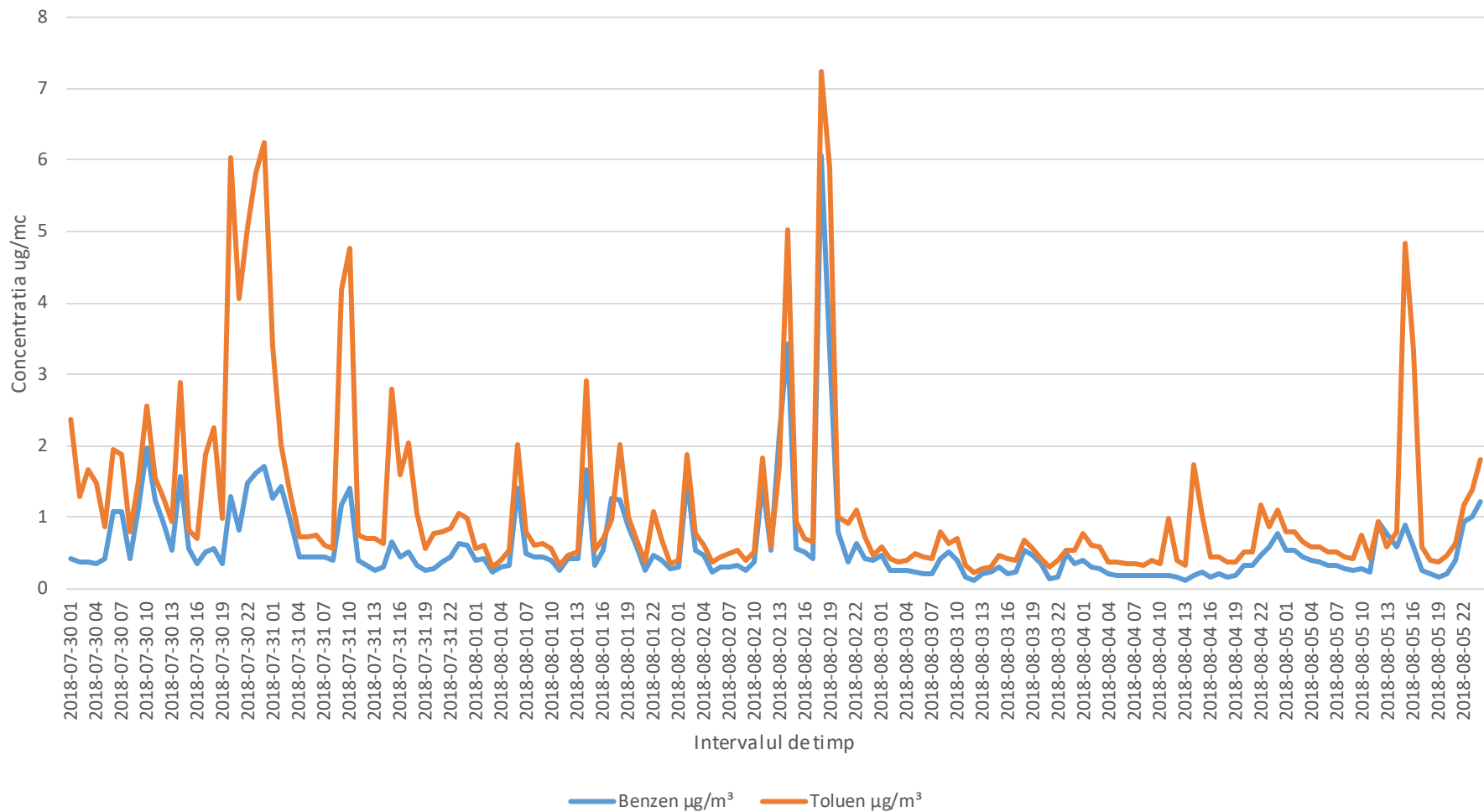
Variatia indicatorului H2S in intervalul 30.07.2018-05.08.2018 in zona de nord a platformei industriale Lukoil



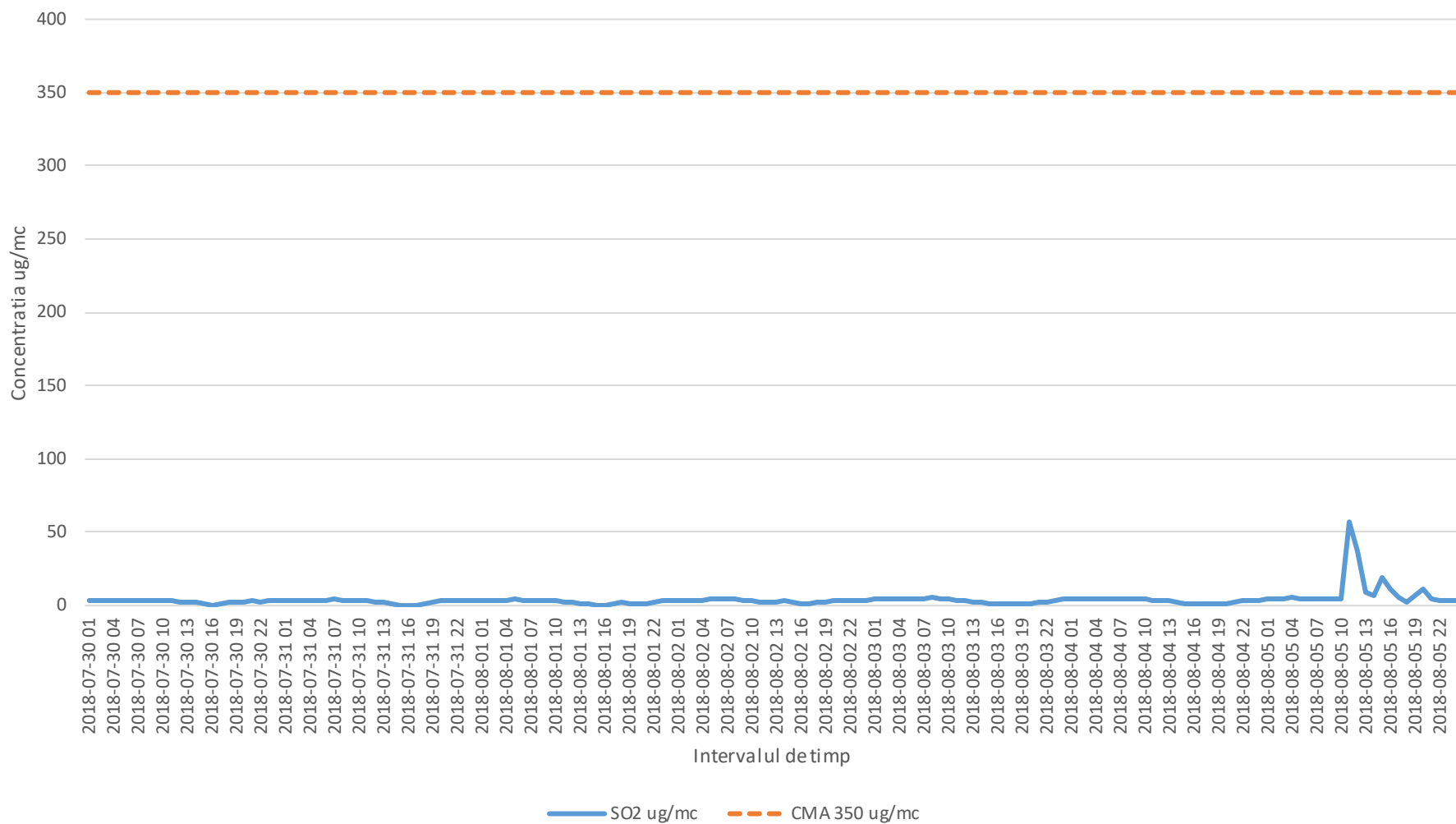
Variatia indicatorului NH3 in intervalul 30.07.2018-05.08.2018 in zona de nord a platformei industriale Lukoil



Variatia indicatorilor C6H6/C7H8 in intervalul 30.07.2018-05.08.2018 in zona de nord a platformei industriale Lukoil



Variatia indicatorului SO2 in intervalul 30.07.2018-05.08.2018 in zona de nord a platformei industriale Lukoil



Variatia indicatorului NO2 in intervalul 30.07.2018-05.08.2018 in zona de nord a platformei industriale Lukoil

